

# SUNNY MOON



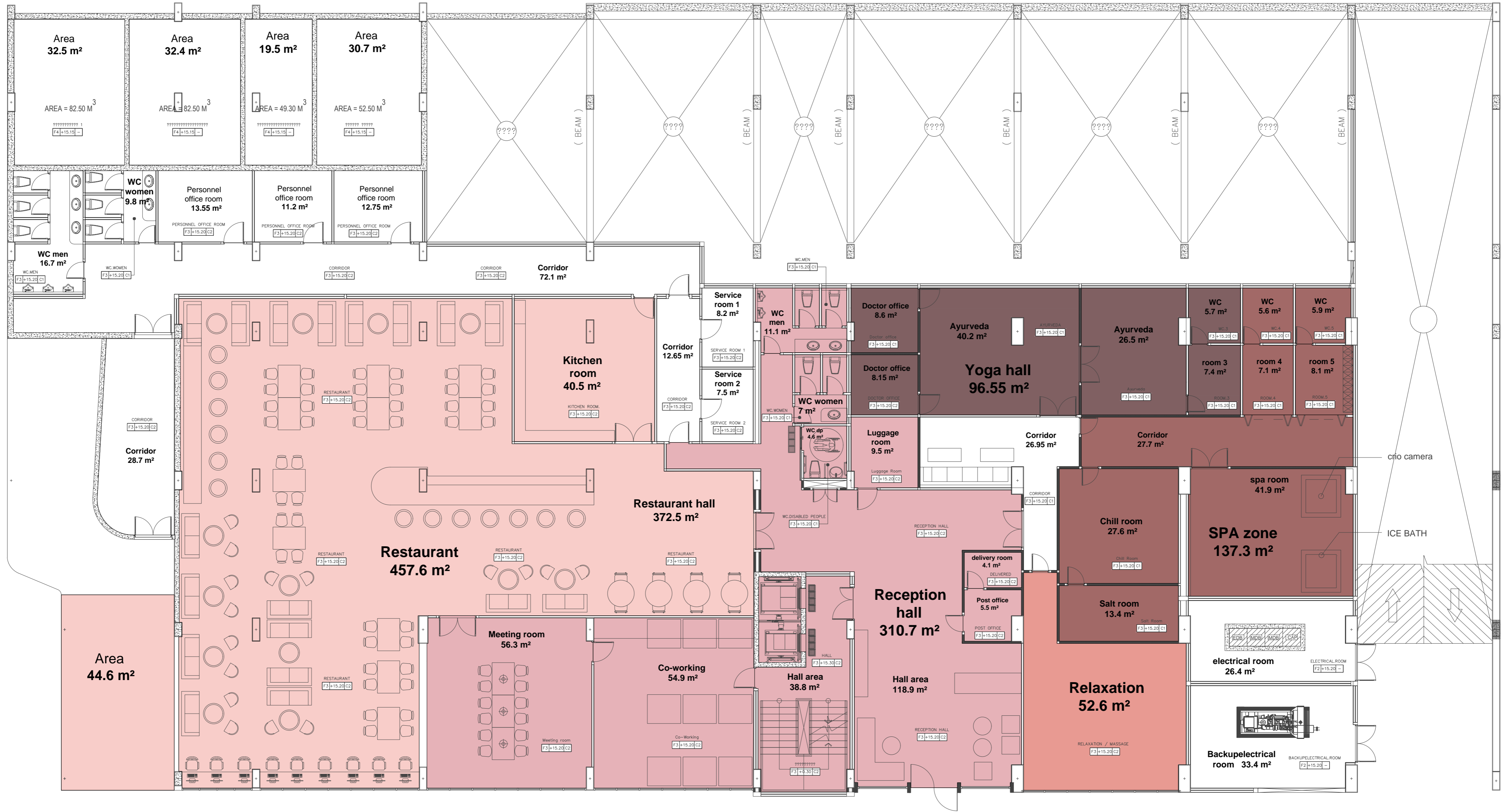
LAYOUTS

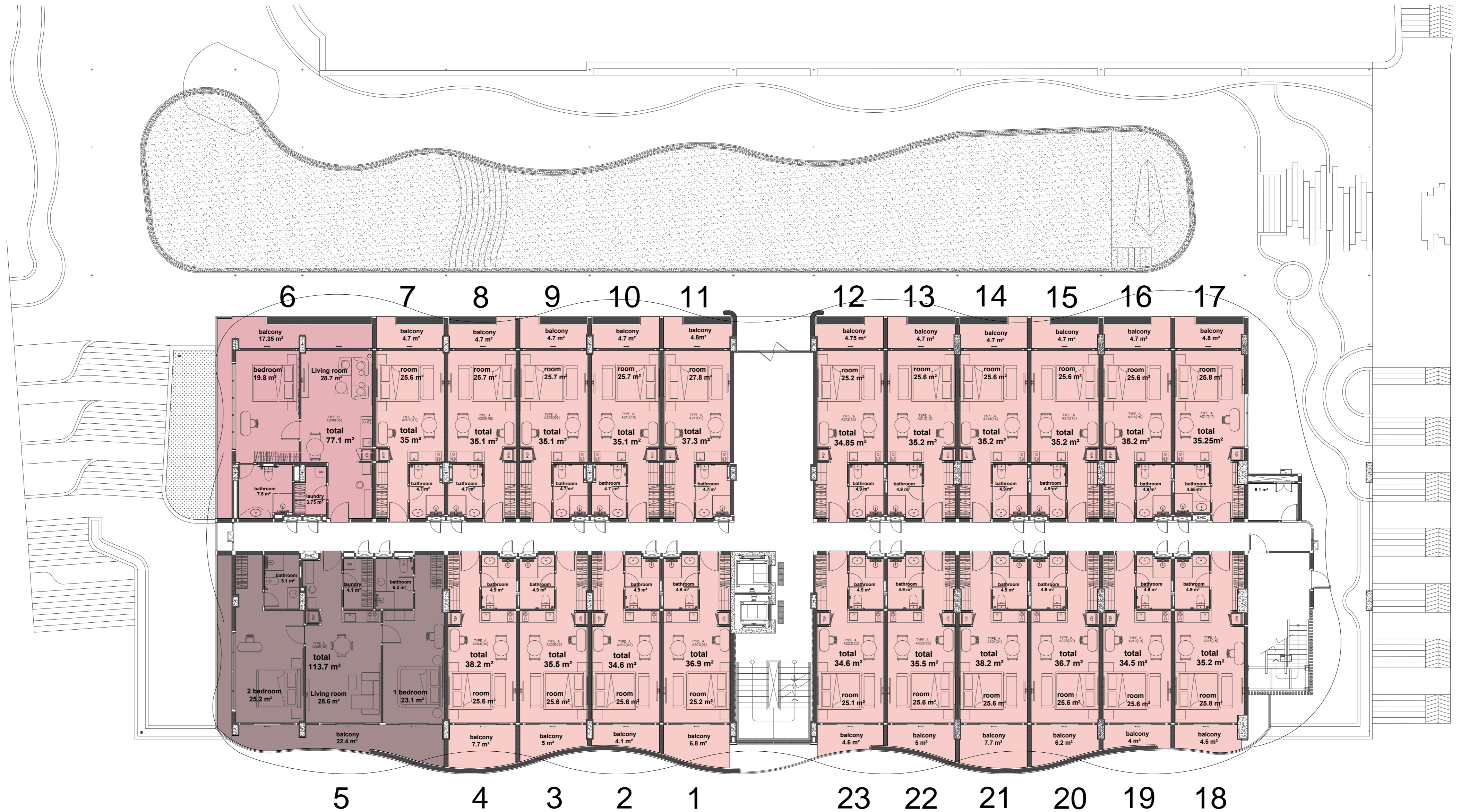


**Sunny Holding**

13 years  
of construction  
experience

@SUNNY.DEVELOPMENT.GROUP  
SUNNYDGTHAI.COM





EXPLICATION OF APARTMENT BUILDING 2 FLOOR:

Type A, 21 pcs.  
 Type B, 1 pcs.  
 Type C, 1 pcs.

TOTAL BY FLOOR:

Studios, 21 pcs.  
 1 Bedroom, 1 pcs.  
 2 Bedroom, 1 pcs.  
 Total, 23 pcs.

TOTAL FLOOR AREA:

Total apartment area: 791.9 m<sup>2</sup>  
 Total balconies area: 147.3 m<sup>2</sup>  
 Total apartment and balconies area: 939.2 m<sup>2</sup>



EXPLICATION OF APARTMENT BUILDING 3 FLOOR:

- Type A, 22 pcs.
- Type B, 1 pcs.
- Type C, 1 pcs.

TOTAL BY FLOOR:

- Studios, 22 pcs.
- 1 Bedroom, 1 pcs.
- 2 Bedroom, 1 pcs.
- Total, 24 pcs.

TOTAL FLOOR AREA:

Total apartment area: 814.2 m<sup>2</sup>  
 Total balconies area: 217.9 m<sup>2</sup>  
 Total apartment and balconies area: 1032.1 m<sup>2</sup>



EXPLICATION OF APARTMENT BUILDING 4 FLOOR:

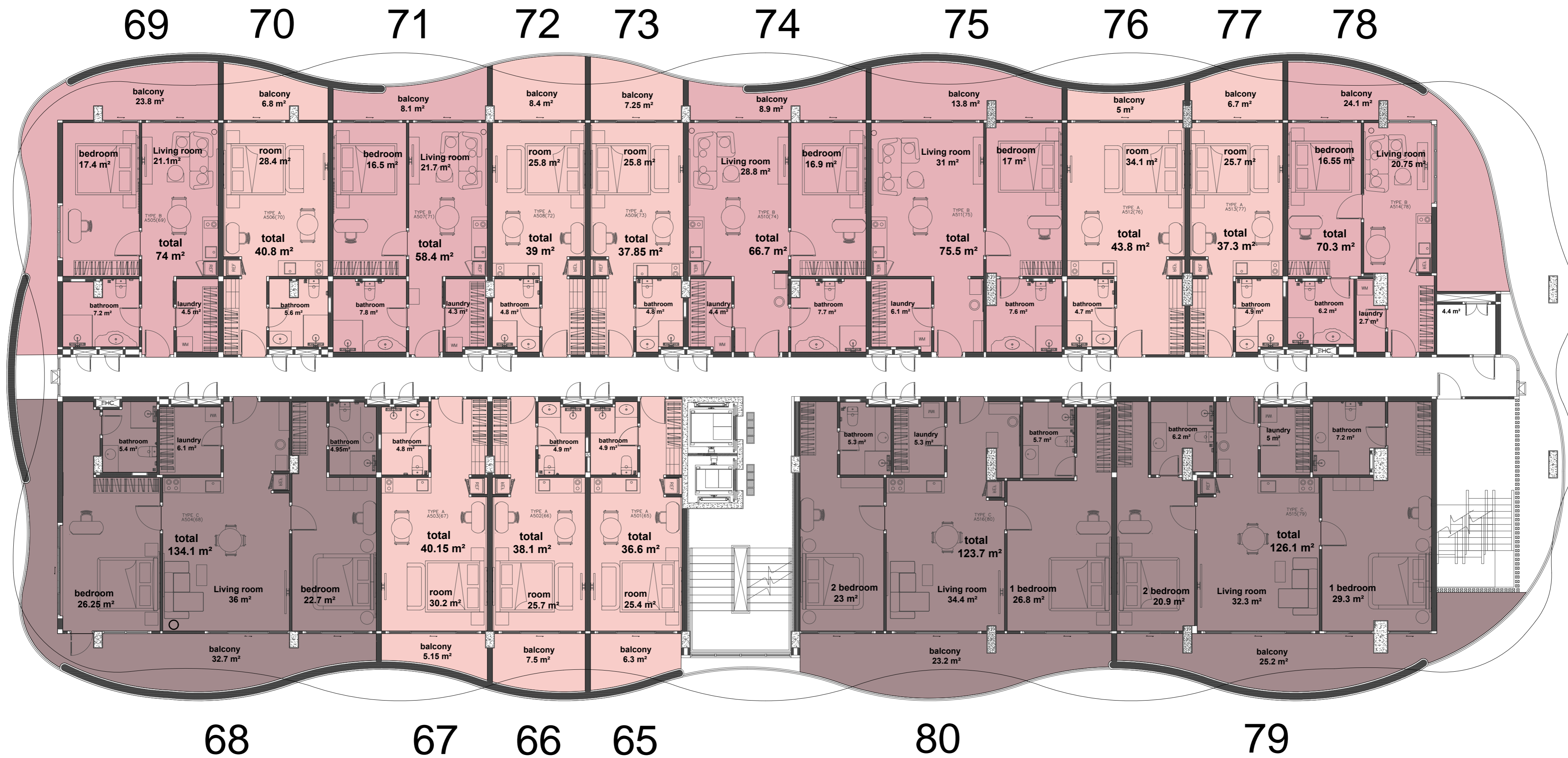
Type A, 10 pcs.  
 Type B, 4 pcs.  
 Type C, 3 pcs.

TOTAL BY FLOOR:

Studios, 10 pcs.  
 1 Bedroom, 4 pcs.  
 2 Bedroom, 3 pcs.  
 Total, 17 pcs.

TOTAL FLOOR AREA:

Total apartment area: 828.5 m<sup>2</sup>  
 Total balconies area: 202 m<sup>2</sup>  
 Total apartment and balconies area: 1030.5 m<sup>2</sup>



EXPLICATION OF APARTMENT BUILDING 5 FLOOR:

- Type A, 8 pcs.
- Type B, 5 pcs.
- Type C, 3 pcs.

TOTAL BY FLOOR:

- Studios, 8 pcs.
- 1 Bedroom, 5 pcs.
- 2 Bedroom, 3 pcs.
- Total, 16 pcs.

TOTAL FLOOR AREA:

- Total apartment area: 822.5 m<sup>2</sup>
- Total balconies area: 212.9 m<sup>2</sup>
- Total apartment and balconies area: 1042.4 m<sup>2</sup>



EXPLICATION OF APARTMENT BUILDING 6 FLOOR:

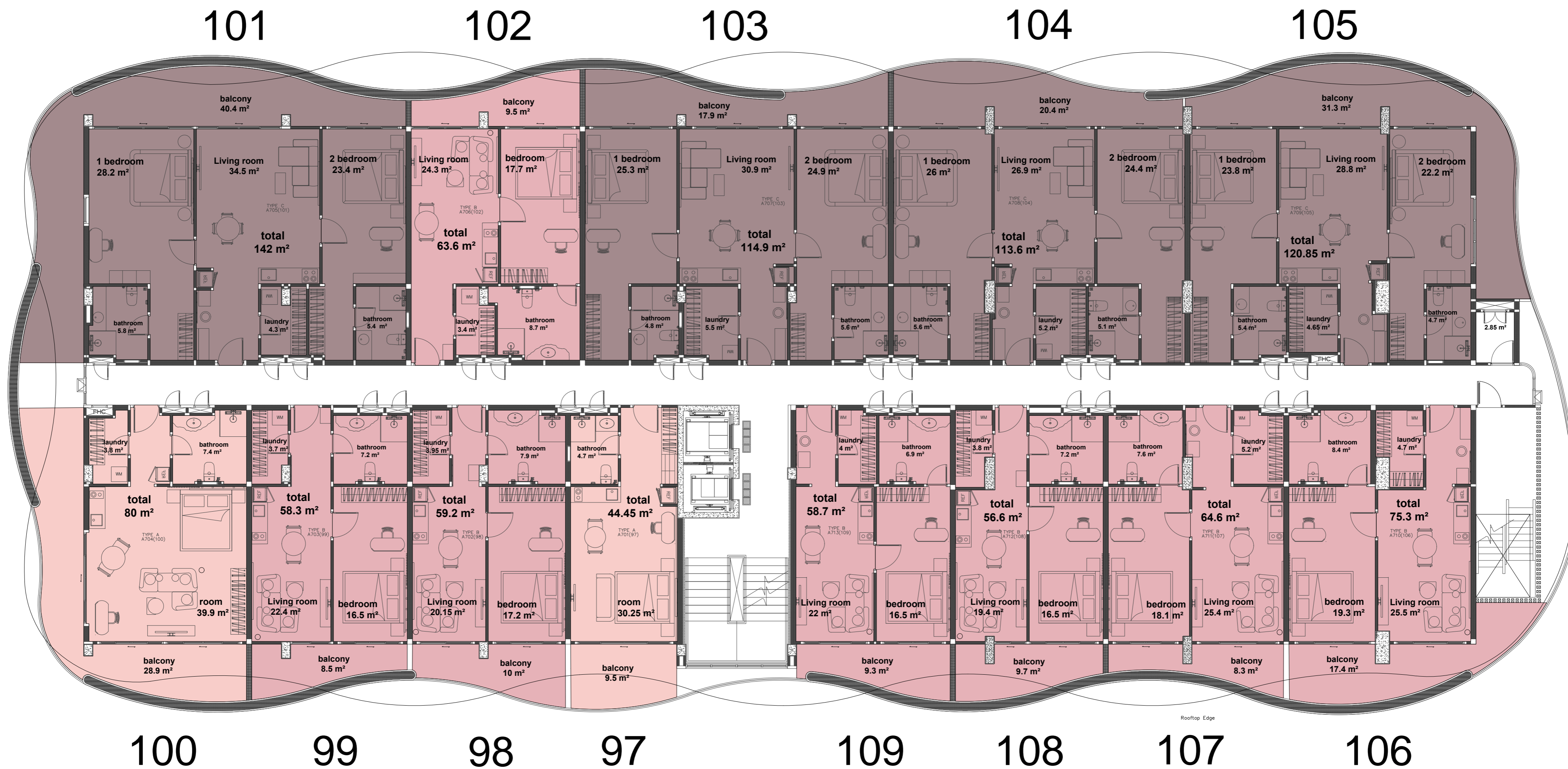
Type A, 6 pcs.  
 Type B, 8 pcs.  
 Type C, 2 pcs.

TOTAL BY FLOOR:

Studios, 6 pcs.  
 1 Bedroom, 8 pcs.  
 2 Bedroom, 2 pcs.  
 Total, 16 pcs.

TOTAL FLOOR AREA:

Total apartment area: 832.6 m<sup>2</sup>  
 Total balconies area: 211.5 m<sup>2</sup>  
 Total apartment and balconies area: 1044.1 m<sup>2</sup>



EXPLICATION OF APARTMENT BUILDING 7 FLOOR:

Type A, 2 pcs.  
 Type B, 7 pcs.  
 Type C, 4 pcs.

TOTAL BY FLOOR:

Studios, 2 pcs.  
 1 Bedroom, 7 pcs.  
 2 Bedroom, 4 pcs.  
 Total, 13 pcs.

TOTAL FLOOR AREA:

Total apartment area: 831 m²  
 Total balconies area: 221.1 m²  
 Total apartment and balconies area: 1052.1 m²



5 6 7 8 9 10 11 12 13 14 15



4 3 2 1 20 19 18 17 16 15

EXPLICATION OF APARTMENT BUILDING 2 FLOOR:

- Type A, 15 pcs.
- Type B, 3 pcs.
- Type C, 1 pcs.
- Type D, 1 pcs.

TOTAL BY FLOOR:

- Studios, 15 pcs.
- 1 Bedroom, 3 pcs.
- 2 Bedroom, 1 pcs.
- 3 Bedroom, 1 pcs.
- Total, 20 pcs.

TOTAL FLOOR AREA:

Total apartment area: 822.1 m<sup>2</sup>  
 Total balconies area: 167.2 m<sup>2</sup>  
 Total apartment and balconies area: 989.3 m<sup>2</sup>



EXPLICATION OF APARTMENT BUILDING 3 FLOOR:

- Type A, 20 pcs.
- Type B, 0 pcs.
- Type C, 1 pcs.
- Type D, 1 pcs.

TOTAL BY FLOOR:

- Studios, 20 pcs.
- 1 Bedroom, 0 pcs.
- 2 Bedroom, 1 pcs.
- 3 Bedroom, 1 pcs.
- Total, 22 pcs.

TOTAL FLOOR AREA:

- Total apartment area: 820.6 m<sup>2</sup>
- Total balconies area: 235.1 m<sup>2</sup>
- Total apartment and balconies area: 1055.7 m<sup>2</sup>



EXPLICATION OF APARTMENT BUILDING 4 FLOOR:

- Type A, 3 pcs.
- Type B, 10 pcs.
- Type C, 1 pcs.
- Type D, 1 pcs.

TOTAL BY FLOOR:

- Studios, 3 pcs.
- 1 Bedroom, 10 pcs.
- 2 Bedroom, 1 pcs.
- 3 Bedroom, 1 pcs.
- Total, 15 pcs.

TOTAL FLOOR AREA:

Total apartment area: 824.5 m<sup>2</sup>  
 Total balconies area: 226.4 m<sup>2</sup>  
 Total apartment and balconies area: 1049.1 m<sup>2</sup>



EXPLICATION OF APARTMENT BUILDING 5 FLOOR:

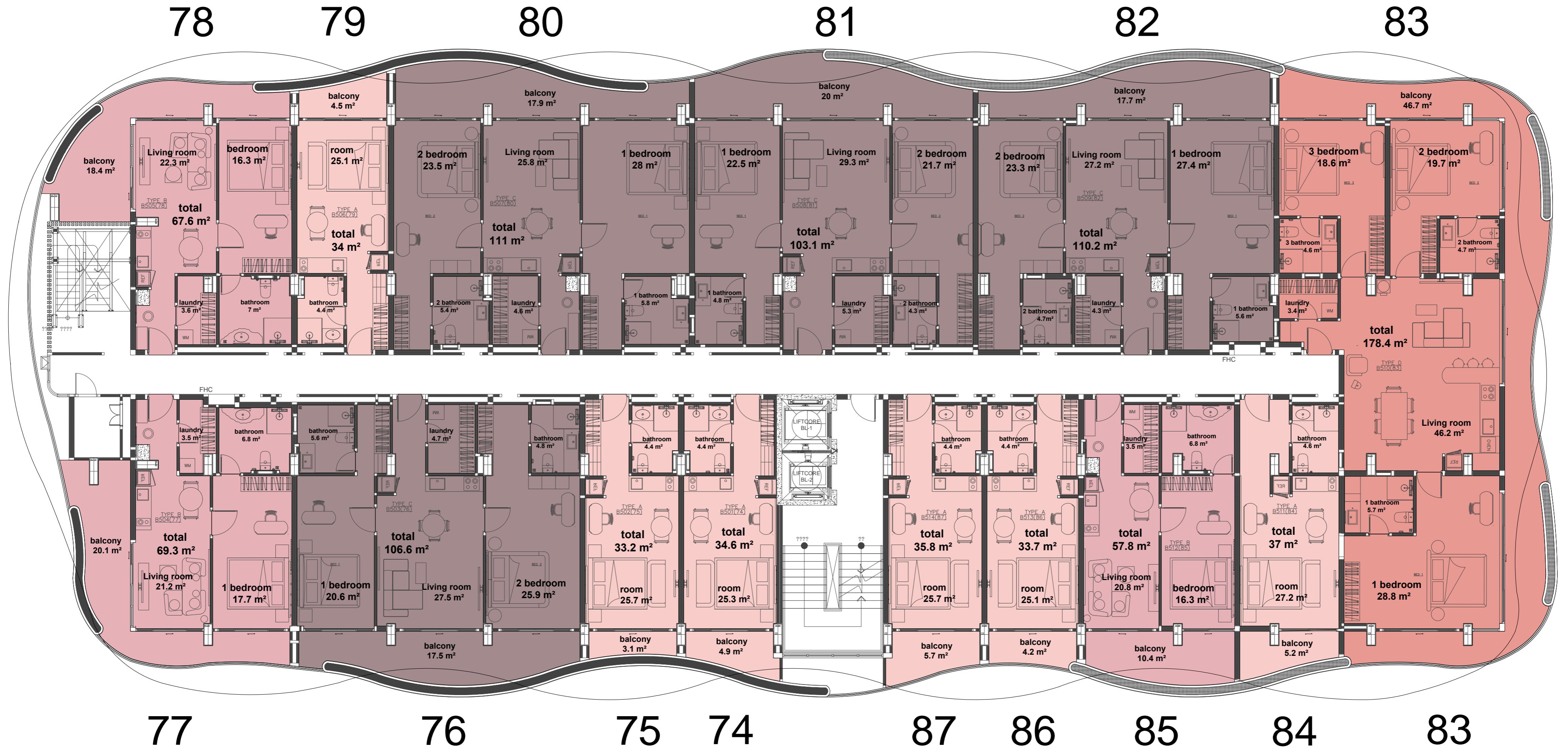
- Type A, 8 pcs.
- Type B, 5 pcs.
- Type C, 2 pcs.
- Type D, 1 pcs.

TOTAL BY FLOOR:

- Studios, 8 pcs.
- 1 Bedroom, 5 pcs.
- 2 Bedroom, 2 pcs.
- 3 Bedroom, 1 pcs.
- Total, 16 pcs.

TOTAL FLOOR AREA:

- Total apartment area: 821.1 m<sup>2</sup>
- Total balconies area: 224.7 m<sup>2</sup>
- Total apartment and balconies area: 1045.8 m<sup>2</sup>



EXPLANATION OF APARTMENT BUILDING 6 FLOOR:

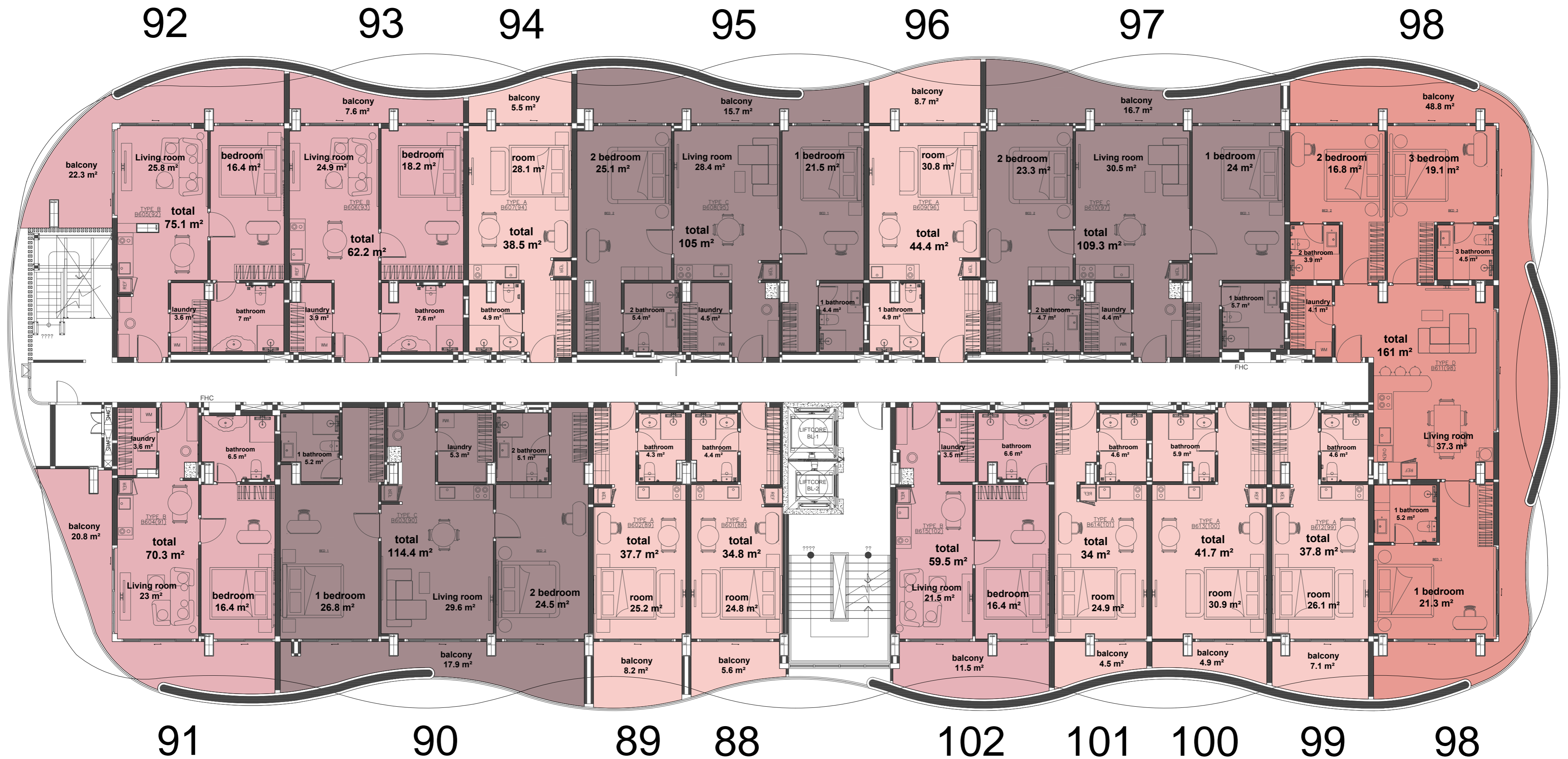
- Type A, 6 pcs.
- Type B, 3 pcs.
- Type C, 4 pcs.
- Type D, 1 pcs.

TOTAL BY FLOOR:

- Studios, 6 pcs.
- 1 Bedroom, 3 pcs.
- 2 Bedroom, 4 pcs.
- 3 Bedroom, 1 pcs.
- Total, 14 pcs.

TOTAL FLOOR AREA:

Total apartment area: 820.8 m<sup>2</sup>  
 Total balconies area: 196.3 m<sup>2</sup>  
 Total apartment and balconies area: 1017.1 m<sup>2</sup>



EXPLANATION OF APARTMENT BUILDING 7 FLOOR:

- Type A, 7 pcs.
- Type B, 4 pcs.
- Type C, 3 pcs.
- Type D, 1 pcs.

TOTAL BY FLOOR:

- Studios, 7 pcs.
- 1 Bedroom, 4 pcs.
- 2 Bedroom, 3 pcs.
- 3 Bedroom, 1 pcs.
- Total, 15 pcs.

TOTAL FLOOR AREA:

Total apartment area: 819.9 m<sup>2</sup>  
 Total balconies area: 205.8 m<sup>2</sup>  
 Total apartment and balconies area: 1025.7 m<sup>2</sup>



EXPLICATION OF APARTMENT BUILDING 8 FLOOR:

- Type A, 9 pcs.
- Type B, 6 pcs.
- Type C, 1 pcs.
- Type D, 1 pcs.

TOTAL BY FLOOR:

- Studios, 9 pcs.
- 1 Bedroom, 6 pcs.
- 2 Bedroom, 1 pcs.
- 3 Bedroom, 1 pcs.
- Total, 17 pcs.

TOTAL FLOOR AREA:

Total apartment area: 824.5 m<sup>2</sup>  
 Total balconies area: 192.3 m<sup>2</sup>  
 Total apartment and balconies area: 1016.8 m<sup>2</sup>

# SUNNY MOON

Sunny Holding

13 years  
of construction  
experience



@SUNNY.DEVELOPMENT.GROUP  
SUNNYDGTHAI.COM